

162 COLLONADES

2 BEDROOMS : BATHROOM : SHOWER ROOM : RECEPTION ROOM :
KITCHEN : TERRACE



£750,000 SUBJECT TO CONTRACT

LEASEHOLD, 175 YEARS FROM 29 SEPTEMBER 1974

SERVICE CHARGE: APROX £2,301 (SIX MONTHS)

EPC RATING: TBC



N A P I

L O N D O N



TWO BEDROOM APARTMENT WITH A LARGE 633.SQ.FT SOUTH FACING TERRACE IN ONE OF LONDON'S W2 MOST SOUGHT AFTER PURPOSE BUILT BLOCKS. THE COLONNADES IS SITUATED BY PORCHESTER SQUARE AND CLOSE TO ALL THE COSMOPOLITAN AMENITIES BAYSWATER AND NOTTING HILL HAS TO OFFER.



N A P I

L O N D O N

PAVILLON, 96 KENSINGTON HIGH ST, W8 4SG

+ 44 203 640 8689

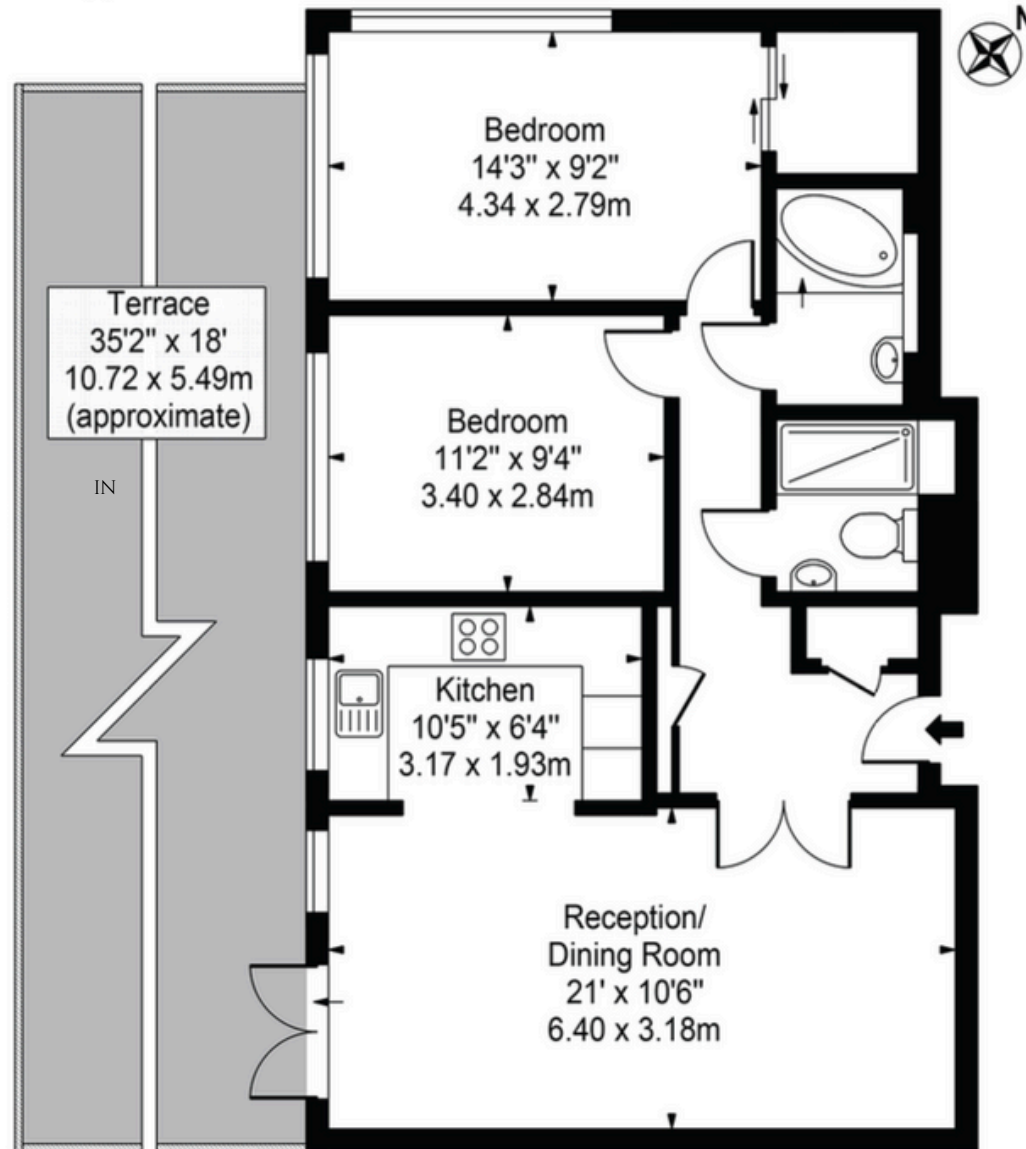
PROPERTY@NAPILONDON.COM

WWW.NAPILONDON.COM

The Colonnades

Approx. Gross Internal Area 739 Sq Ft - 68.66 Sq M

Approx. External Area Of Terrace 633 Sq Ft - 58.85 Sq M



Second Floor

For Illustration Purposes Only - Not To Scale

This floor plan should be used as a general outline for guidance only and does not constitute in whole or in part an offer or contract. Any intending purchaser or lessee should satisfy themselves by inspection, searches, enquiries and full survey as to the correctness of each statement. Any areas, measurements or distances quoted are approximate and should not be used to value a property or be the basis of any sale or let.