

NAPI

LONDON

PAVILLON, 96 KENSINGTON HIGH ST, W8 4SG

+ 44 203 640 8689

PROPERTY@NAPILONDON.COM

WWW.NAPILONDON.COM



# 508, 4 WOOD CRESCENT, WHITE CITY W12

ENTRANCE HALL: RECEPTION : BALCONY : OPEN PLAN KITCHEN :  
BEDROOM: SHOWER ROOM : LIFT : 24 HOUR CONCIERGE : RESIDENTS'  
LEISURE FACILITIES (GYM/POOL/CINEMA ROOM/LOUNGE)



£775,000 SUBJECT TO CONTRACT

LEASEHOLD - APROX 968 YEARS REMAINING

SERVICE CHARGE: 6,200 PER ANNUM

EPC RATING: B





A BRIGHT AND SPACIOUS ONE-BEDROOM APARTMENT ON THE FIFTH FLOOR OF THE HISTORIC TELEVISION CENTRE IN WHITE CITY, FEATURING PARK VIEWS. THE OPEN-PLAN LIVING AREA INCLUDES A BESPOKE ITALIAN KITCHEN AND SLIDING DOORS TO A PRIVATE BALCONY.

THE PRINCIPAL BEDROOM OFFERS BUILT-IN STORAGE AND LARGE WINDOWS FOR ABUNDANT NATURAL LIGHT, WITH AN EN-SUITE BATHROOM ACCESSED THROUGH A WALK-THROUGH WARDROBE



RESIDENTS ENJOY EXCEPTIONAL AMENITIES, INCLUDING A SOHO HOUSE GYM, PRIVATE CINEMA, 24-HOUR CONCIERGE, AND A LOUNGE WITH WORKSPACES. THE AREA FEATURES INDEPENDENT RESTAURANTS, THE SOHO HOUSE MEMBERS' CLUB, AND WHITE CITY PLACE, WITH ITS SHOPS AND MUSEUMS. WESTFIELD SHOPPING CENTRE IS NEARBY.

EXCELLENT TRANSPORT LINKS INCLUDE WHITE CITY (CENTRAL LINE), WOOD LANE (HAMMERSMITH & CITY, CIRCLE LINES), AND SHEPHERD'S BUSH (OVERGROUND).

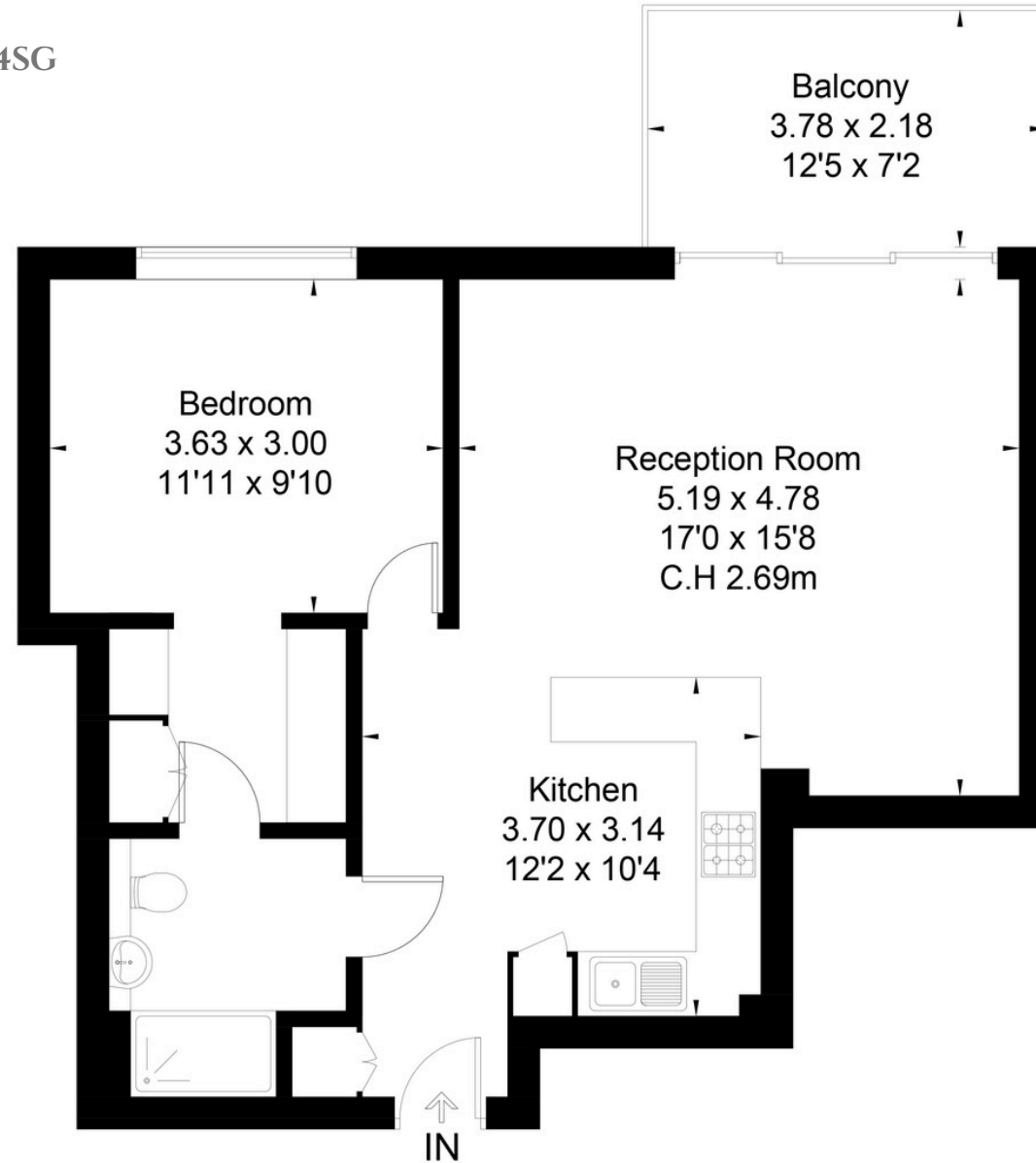


PAVILLON, 96 KENSINGTON HIGH ST, W8 4SG

+ 44 203 640 8689

PROPERTY@NAPILONDON.COM

WWW.NAPILONDON.COM



### Fifth Floor

