



# HYDE PARK GARDENS, LONDON W2

HIGH CEILING: RECEPTION/DINING ROOM: TWO BALCONIES: EAT-  
IN-KITCHEN : PRINCIPAL BEDROOM WITH ENSUITE BATHROOM :  
SECOND DOUBLE BEDROOM : SECOND BATHROOM : LIFT : PORTER :  
GATED PRIVATE ROAD: OFF STREET PARKING



£3,950,000 SUBJECT TO CONTRACT

SHARE OF FREEHOLD

SERVICE CHARGE: APPROX. £3224 PER QUARTER

EPC RATING: E

**NAPI**  
LONDON

PAVILLON, 96 KENSINGTON HIGH ST, W8 4SG

+ 44 203 640 8689

PROPERTY@NAPILONDON.COM

WWW.NAPILONDON.COM



NAPI

LONDON







THIS CHARMING AND IDYLIC TWO-BEDROOM APARTMENT SITUATED ON THE FIRST FLOOR OF A DISTINGUISHED PERIOD BUILDING. OFFERING 4.1-METER-HIGH CEILINGS THAT ENHANCE ITS SPACIOUS FEEL.



N A P I

L O N D O N

COVERING 1,437 SQUARE FEET, THE FLAT IS FLOODED WITH NATURAL LIGHT THROUGH ITS TWIN BALCONIES. THE FLAT HAS BEEN METICULOUSLY REFURBISHED WITH BESPOKE JOINERY AND OPULENT FITTINGS, ENSURING A LUXURIOUS LIVING EXPERIENCE.













# NAPI

LONDON

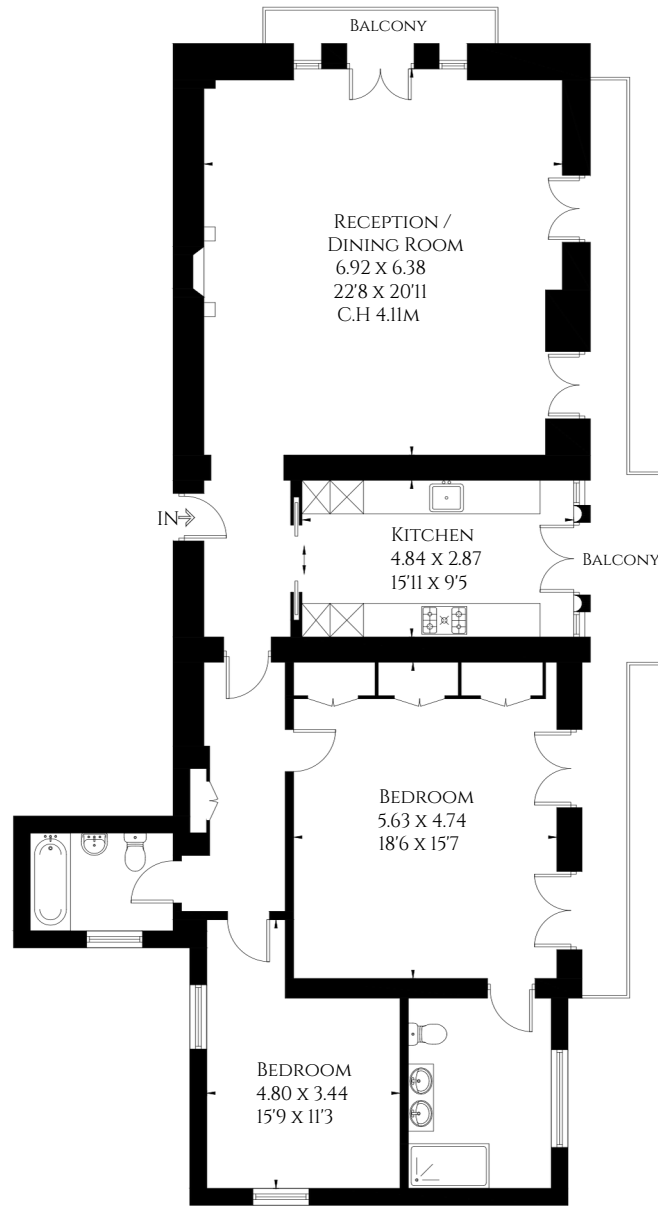


THE APARTMENT IS LOCATED ON A PRIVATE ROAD DIRECTLY OPPOSITE HYDE PARK, PROVIDING RESIDENTS WITH STUNNING VIEWS AND ACCESS TO SERENE, BEAUTIFULLY MAINTAINED COMMUNAL GARDENS. ADDITIONAL AMENITIES INCLUDE GATED PRIVATE PARKING, ONSITE PORTERAGE, AND ACCESS TO AN AWARD-WINNING COMMUNAL GARDEN, OFFERING A TRANQUIL ESCAPE IN THE HEART OF THE CITY.





HYDE PARK GARDENS, W2  
APPROXIMATE FLOOR AREA = 133.5 SQ\_M / 1437 SQ\_FT



FIRST FLOOR



THIS FLOOR PLAN HAS BEEN DRAWN IN ACCORDANCE WITH RICS PROPERTY MEASUREMENT 2ND EDITION.  
ALL MEASUREMENTS, INCLUDING THE FLOOR AREA, ARE APPROXIMATE AND FOR ILLUSTRATIVE PURPOSES ONLY @DJD.LONDON #76793