

NAPI

LONDON

PAVILLON, 96 KENSINGTON HIGH ST, W8 4SQ

+ 44 203 640 8689

PROPERTY@NAPILONDON.COM

WWW.NAPILONDON.COM



# 7 SLOANE STREET SW1X



ONE BEDROOM : BATHROOM : RECEPTION  
ROOM : OPEN PLAN KITCHEN : 24HR  
PORTER : EPC RATING E

**£895 PW / £3,878 PM SUBJECT TO CONTRACT**



7

SLOANE

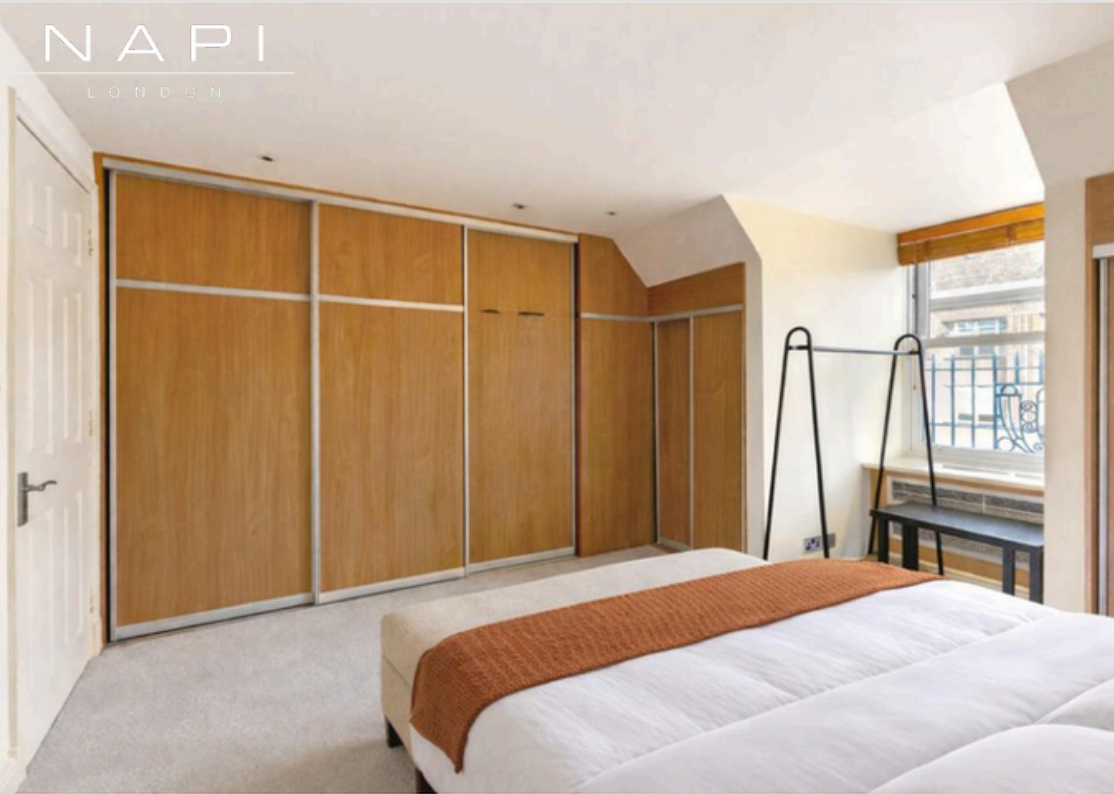
7

STREET

7

This beautifully presented one-bedroom apartment is set within an exclusive period building with lift access, entered via Sloane Street. Extending to approximately 733 sq ft, the flat offers a well-proportioned reception room, an open-plan kitchen, a generous double bedroom and a contemporary bathroom. Residents benefit from a 24-hour porter, while the apartment is within walking distance of Harrods and the world-renowned luxury boutiques lining Sloane Street, placing it at the heart of one of London's most desirable addresses.

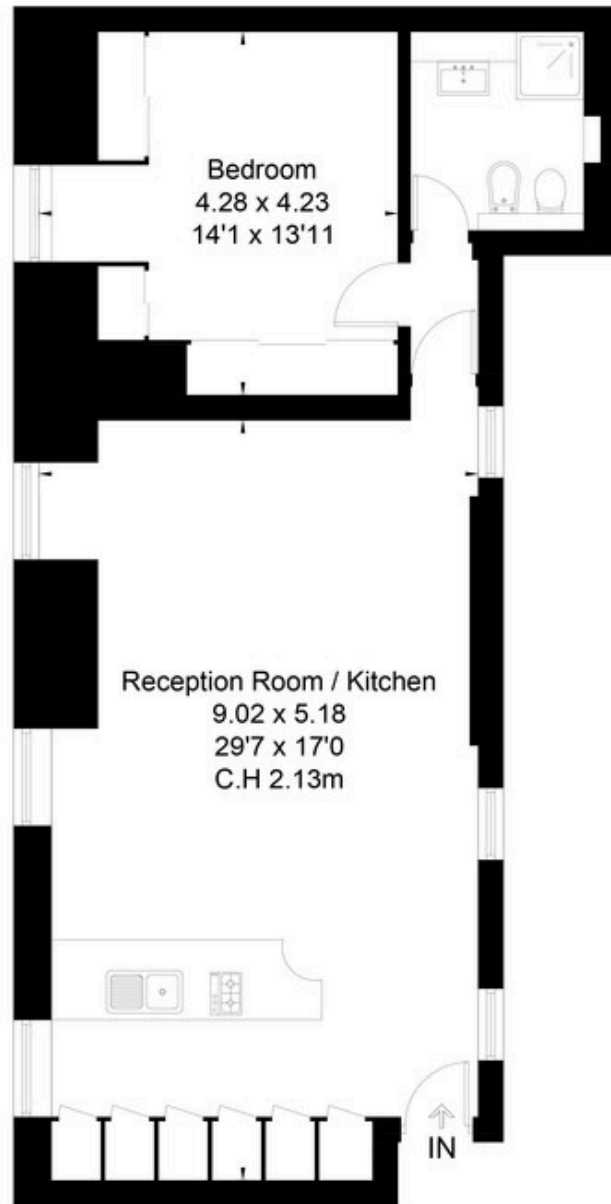




NAPI

LONDON





### Sixth Floor



This floor plan has been drawn in accordance with RICS Property Measurement 2nd edition.

All measurements, including the floor area, are approximate and for illustrative purposes only. @fourwalls-group.com #102776